



*create beauty with Pony*



## *The magic of light*

Decorating your home in an atmospheric way is fun all year round. Christmas offers endless possibilities. How about a knitted candle lantern cover with little crocheted trees?



## Candle lantern cover with tree pendant

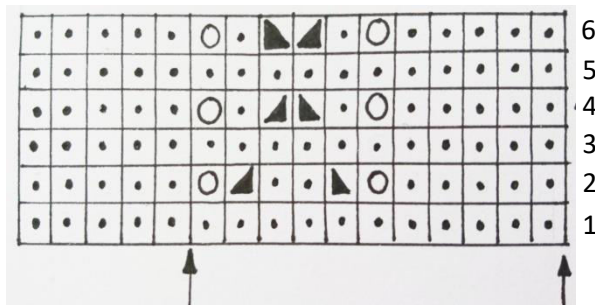
**PONY Colour** Double Pointed Needles, 3 mm, **PONY Bamboo Silver**, Pony Crochet Hook with bamboo handle Nr. 3, **PONY Colour Eye** Embroidery Needles, **PONY Wool Needle**, **PONY Embroidery Scissors**.

**Additionally you also need this:** 1 glass candle holder/hurricane windlight, 31.5 cm height, 19 cm circumference; 50 g each white and light-green cotton yarn, yardage 125m/50g; red glass beads 6 mm diameter; polyester wadding; suitable green cotton sewing thread.

### This is how it goes, candle lantern cover:

**Gauge:** 34 stitches x 31 rows = 10 x 10cm

#### Stitchmap:



- Knit stitch ○ Yarn over needle
- ▲ Knit 2 stitches together, k2tog
- ▼ Slip 1, Knit 1, pass slip stitch over (decreasing)

**Cast on 66 stitches** and distribute evenly on the 4 needles of your set of five double pointed needles. It is knitted in rounds = Rnd according to stitchmap, pattern repeat is knitted continuously between the arrows. **1<sup>st</sup> to 6<sup>th</sup> Rnd** repeat continuously to a height of 18 cm. Cast off stitches as they appear. **Left: Pony Colour Double Pointed Needles**, 3 mm, with evenly spread stitches. To check pull the knitted tube over the glass lantern.



### Small Tree:



**Small tree (instructions for large tree are in parentheses):** cast on 11 chain stitches (13 ch). **1<sup>st</sup> to 8<sup>th</sup> row** 5 double crochet (dc) each, in the **5<sup>th</sup> row** pierce only the back loop of the stitch. At the end of the **8<sup>th</sup> row** crochet 6 chain stitches (8 ch), cut off thread. On the opposite side pierce into the **8<sup>th</sup> row**, cast on 7 chain stitches (9 ch), turnover(1 tch) and over the whole width crochet 17 dc (21dc) = **9<sup>th</sup> row**. **10<sup>th</sup> row:** 17dc (21 dc). **11<sup>th</sup> row and continuously:** at the beginning of each row crochet together the two first double crochets, repeat until only one double crochet is left. The opposite tree side is completed in mirror image.

Fold the trees together and do not completely crochet all around with double crochet. Stuff the trees with polyester wadding, then crochet the rest together. Crochet 5 chain stitches at the top of the tree, as a loop for hanging.

Tie off the ends of the threads with the **PONY Wool Needle**. Utilize the **PONY Needle Threader** to thread the delicate **PONY Embroidery Needles**. Sew the beads, evenly spread, on the tree. If you like attach a bow to the tip of the tree. Whoever likes can use the **PONY Thimble** when sewing on the beads. Tie some ribbon or cord around the candle lantern and attach the tree with it. Use the large tree as a gift pendant or tree pendant. Place fairy lights in the lantern and fill up with Christmas tree ornaments.

